

# Biweekly E-News

## Economic, Trade & Investment, Culture and Social



Economic, Trade & Investment

### Islamic Economy Ecosystem: Gateway to Indonesia Emas 2045

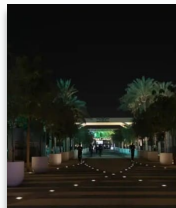
[Read more >](#)



Economic, Trade & Investment

### Largest in Southeast Asia, Indonesia's Digital Economy Value Surpasses IDR 1,266 Trillion

[Read more >](#)



Economic, Trade & Investment

### Italy's Green Commitment Takes Center Stage at COP28

[Read more >](#)



Economic, Trade & Investment

### European Investors Strengthen Partnership Through Indonesia Europe Investment Summit 2023

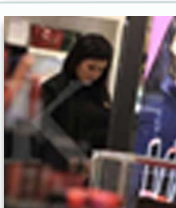
[Read more >](#)



Economic, Trade & Investment

### The Government Boosts the Export of Rendang and Spices to Europe

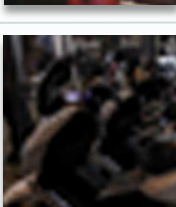
[Read more >](#)



Economic, Trade & Investment

### Indonesian Cosmetic Industry Exhibits Strong Export Potential, Reaching USD 601.15 Million in October

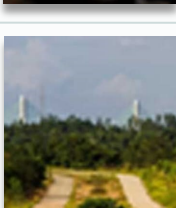
[Read more >](#)



Economic, Trade & Investment

### Indonesia Successfully Exports 2,000 Electric Motorcycles to Malaysia, Expanding the EV Market

[Read more >](#)



Economic, Trade & Investment

### Capital City National Authority (IKN) Targets USD 3.2 Billion Infrastructure Investment by Year-End

[Read more >](#)



Culture

### Healthy Herbal Culture Designated as UNESCO Intangible Cultural Heritage

[Read more >](#)



Culture

### Festa della Micòula – Hône

[Read more >](#)



Social

### Fiera degli Oh Bej! Oh Bej! - Milano

[Read more >](#)



Social

### Lebih Beach Festival Will Be Held Again in Early 2024

[Read more >](#)

## Past Event

### "EPISTEMIC COMMUNITY AND MARKET FORUM (ECMF) INDONESIA - ITALY" - 1 DECEMBER 2023

The Italian Business Association in Indonesia in collaboration with the Ministry of Foreign Affairs, the Embassy of the Republic of Indonesia in Rome (KBRI Rome), and Palm Oil Fund Management Agency held an offline forum for the first time in Rome with a title of "Epistemic Community and Market Forum (ECMF) Indonesia - Italy". [Read more...](#)



### Platinum Member



### Gold Member



### Institutional Partners



### Business Partners

